

Tidelli

OUTDOOR LIVING



BAHIA

After traveling the world, Tidelli has returned home to pay tribute to our origins in Bahia. It was Bahia where the Portuguese sailors first arrived. The "New Land" was the first capital of Brazil and is the place we call home.

The land has a rich cultural influence from Europe and Africa. Here we embrace the coexistence of all races and creeds. Our people are guided by the rhythm of drums and inspired by a festive spirit. At Tidelli we use our Brazilian surroundings to inspire unique designs. Our hands are used to weave complex patterns and our hearts are dedicated to creating the best hand-made products available on the market today.

We invite you to explore the beauty of Brazil's Northeastern region; the culture, Brazilian color palate and a product that pays tribute to the people of Brazil.





























DETAIL: HPL (HIGH PRESSURE LAMINATE) • MESH SWIVEL CHAIR













ACCESSORIES: BASKET IN NAUTICAL ROPE • DETAIL: FUSION SOFA

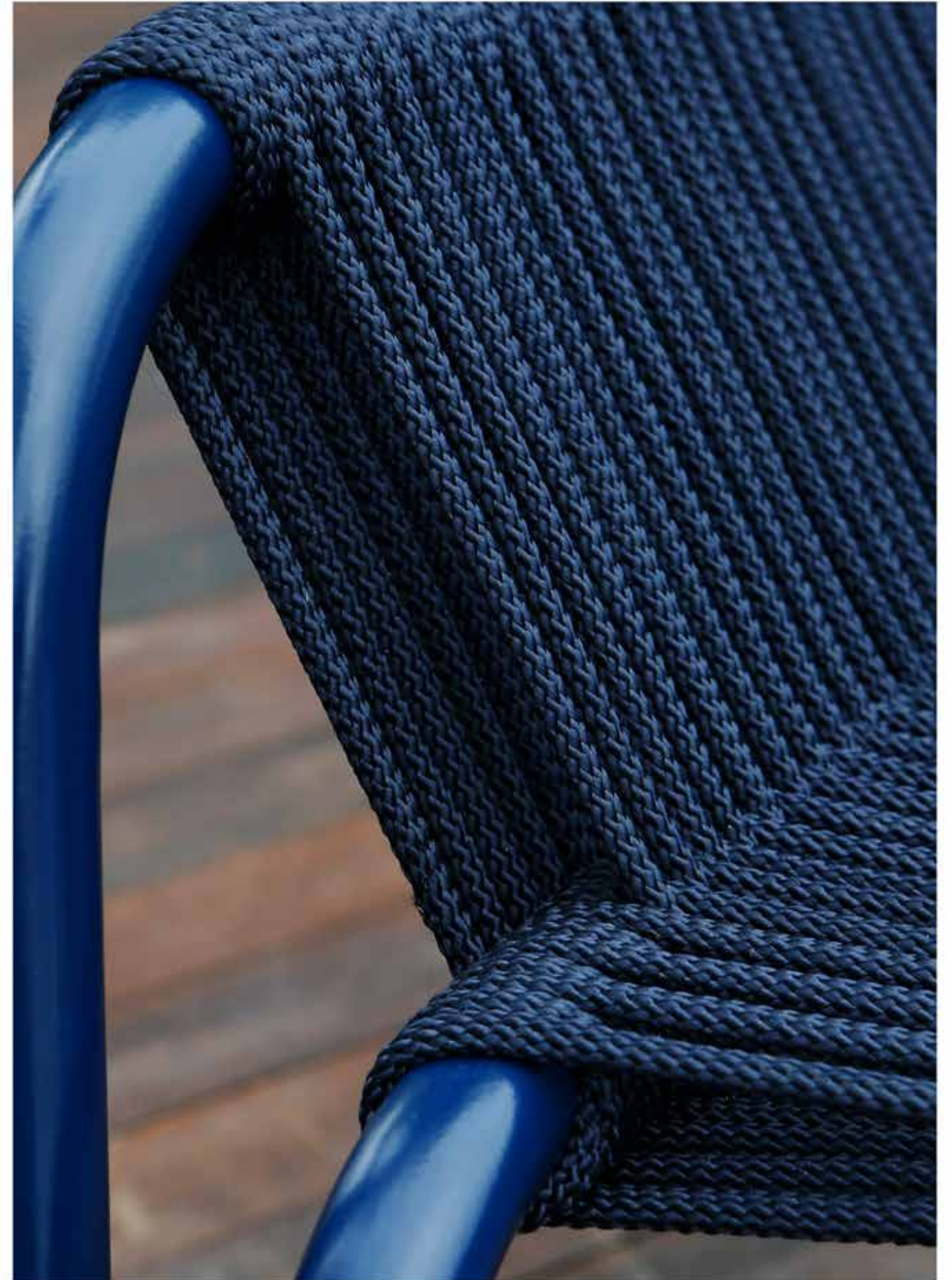






DETAIL: MOOREA OPEN BACK SOFA • FLOAT COFFEE TABLE • OUTDOOR RUG





DETAIL: QUINTAL LOUNGE CHAIR IN NAUTICAL ROPE



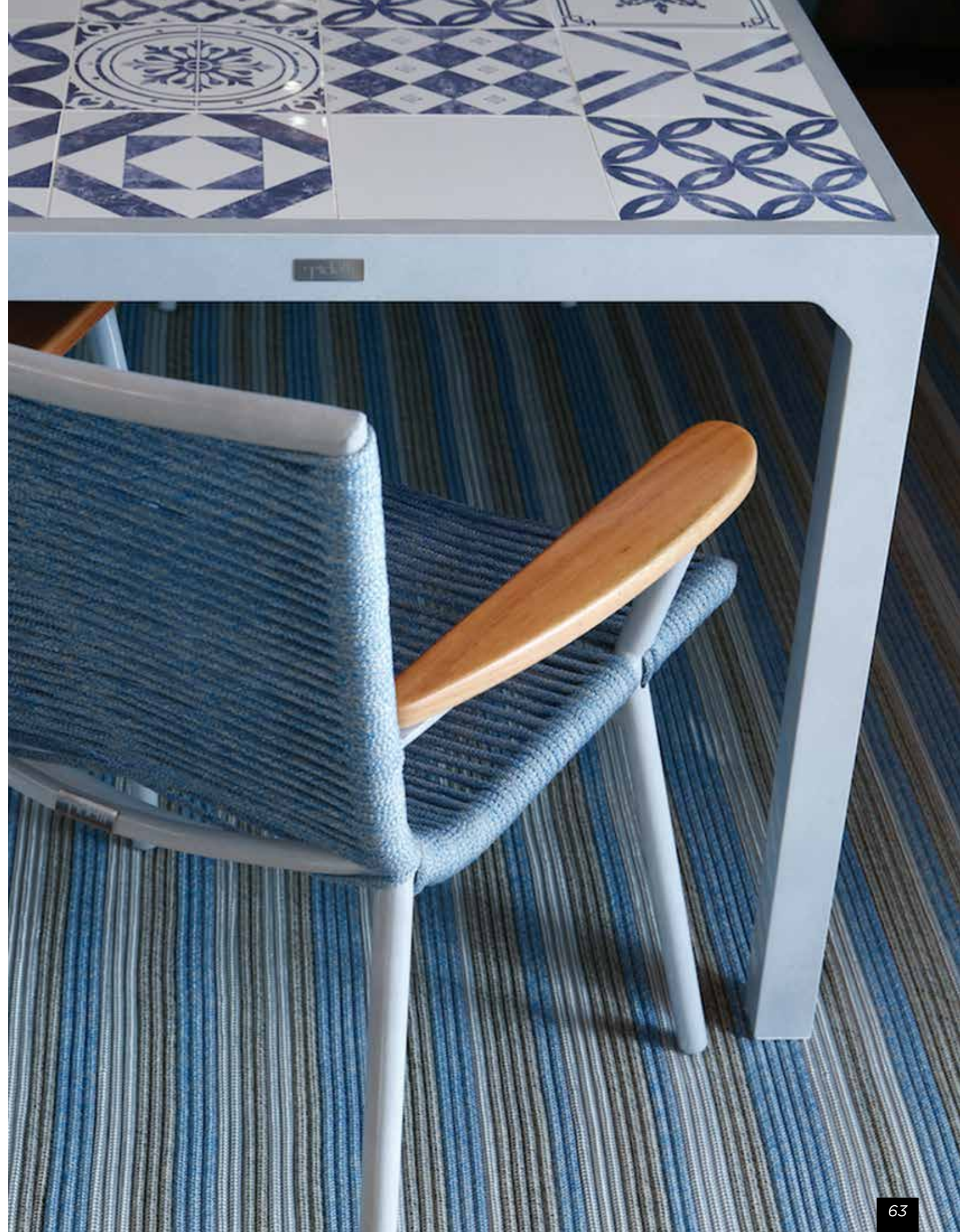




BOSS CHAIR IN SLING • DETAIL: ALGARVE VILA REAL TILE



























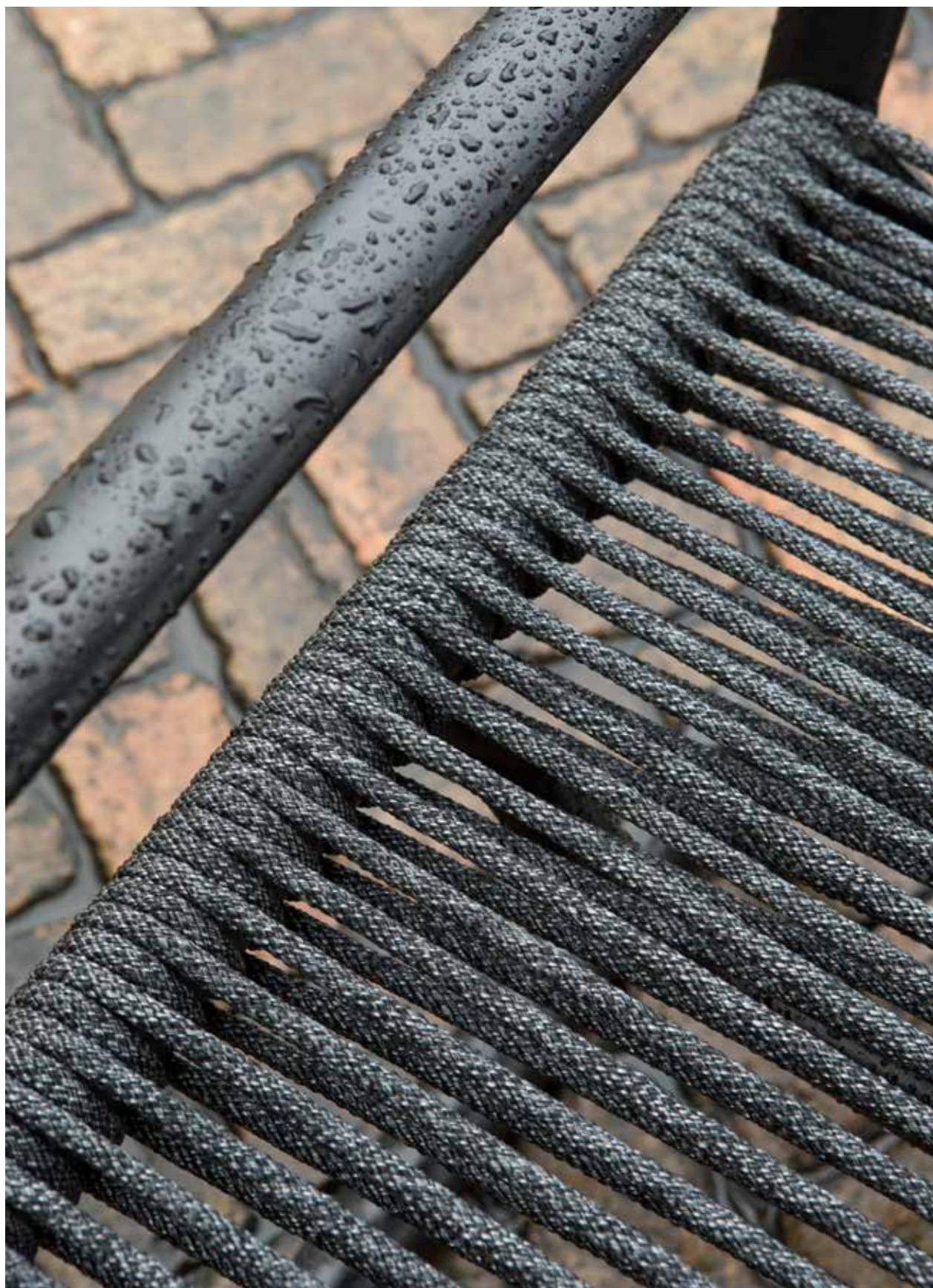




BORA BORA LOUNGE CHAIR ALL ROPE • DETAIL: NAUTICAL ROPE FLAT WEAVE







SPECIAL PROJECTS



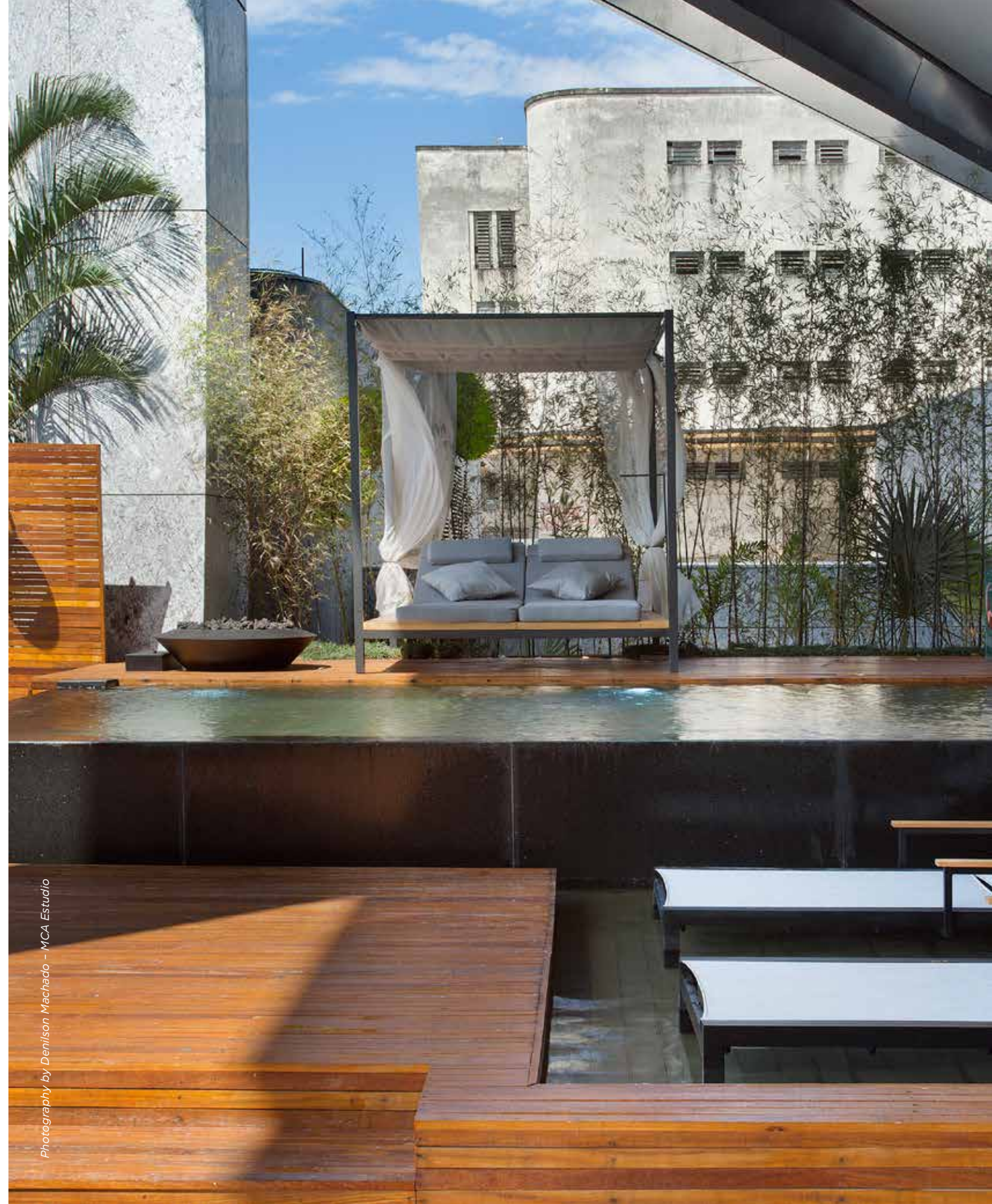
Photography by: Jomar Bragança



Photography by Denilson Machado - MCA Estúdio



Photography by Denilson Machado - MCA Estúdio



Photography by Denilson Machado - MCA Estúdio



Photography by: Andre Nazareth

CASA COR RIO DE JANEIRO • DESIGNERS: LEILA BITTENCOURT & CRISTIANA SPINOLA



Photography by: Catarina Monnier

RESIDENTIAL HOLLYWOOD HILLS, CALIFORNIA • DESIGNER: CESAR GIRALDO

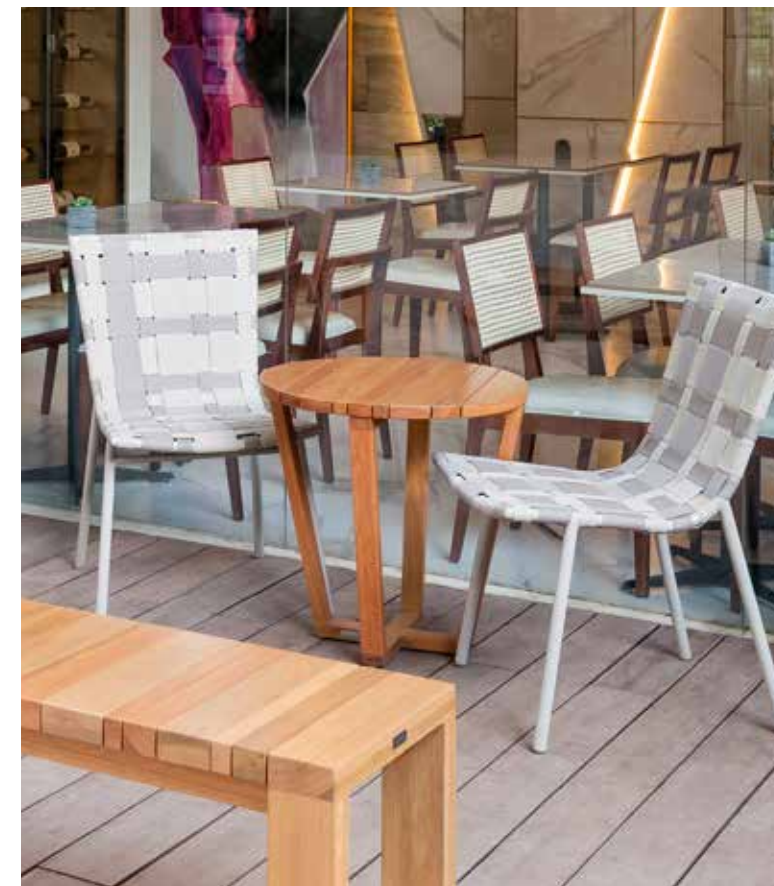


TIVOLI ECORESORT • BAHIA





Photography by: Marcus Camargo



Photography by: Gustavo Sôter



Photography by: Gustavo Sôter



Photography by: Gustavo Sóter



Photography by: Gustavo Sóter



Photography by: Gustavo Sóter



Photography by Jomar Bragança



RESTAURANT MOSAICO • CASA COR BRASÍLIA • DESIGNER: ANDRÉ ALF

Photography by: Clausem Bonifácio



WALDORF ASTORIA • GRAND WAILEA HUMUHUMU RESTAURANT, HAWAII, USA
DESIGNER: ROGER GAGON, ISLAND DESIGN CENTER



DESIGNER: CESAR GIRALDO • WESTEDGE CAFÉ 2017, CALIFORNIA

ABOUT TIDELLI

Developing the interaction between design and nature is much more than thinking about a product. It is humanizing the relationship between man and the environment; and, creating connections between people.

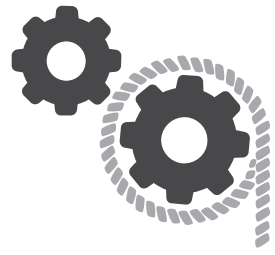
In a world ruled by machines, Tidelli maintains the beautiful old art of craftsmanship to create unique products. The task is only made possible by the dedication and love that our team puts into the production. Their wholehearted contributions are unique and unequalled.

The integration of Tidelli, to the community of Moradas da Lagoa located in the suburbs of Salvador, solidifies our thinking that together we achieve more. Inclusion is the best way to unite people, and our 300+ employees are the proof.



Tidelli
OUTDOOR LIVING

Through exclusive partnerships with the best Brazilian designers, Tidelli offers unique and original collections, recognized by numerous awards and clients. We pride ourselves on always bringing new concepts, forms and countless options so you can customize your project in your own way.



THE NAUTICAL ROPE

After much research and investment, Tidelli developed its own proprietary manufacturing system. With its full operation, Tidelli turns the finest raw material, imported from Europe, into miles and miles of nautical rope. The quality and versatility of this product can be used in the most creative and innovative outdoor living projects. With its different colors, patterns, thickness and weave to choose from, you can find what you need to create the product that you want.



THE NAUTICAL ROPE IS:



WEATHER RESISTANT



MADE WITH POLYESTER



DOES NOT ABSORB HEAT OR LIQUIDS



CONTOURS TO THE BODY



IS EASY TO CLEAN



REQUIRES MINIMAL MAINTENANCE



EXTREMELY DURABLE



MAY BE CUSTOMIZED WITH A CHOICE OF 60+ COLOR OPTIONS

DESIGNERS



RUY OHTAKE

P E N D U L O S W I N G

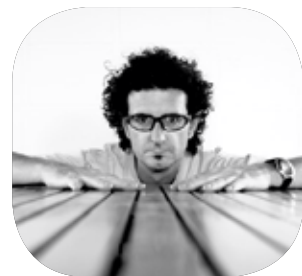
Ruy's work is known internationally for design projects that give continuity to Brazilian modern, lyrical, and light architecture that plays beautifully with curves and innovation.



MAURÍCIO ARRUDA

Q U I N T A L

Maurício likes to use design to tell stories. His concern with the environment is always on his agenda, as can be seen on his timeless and flexible choices marked with an extra Brazilian cultural influence. Maurício found, at Tidelli, the right materials and processes to bring his ideas to life.



ALFIO LISI

A M A D O

Alfio's motto is to make life better, more comfortable and more joyful through design. Inspired by the traditional chairs found in any balcony throughout Brazil, Alfio resorted to Tidelli's craftsmanship and technology to create the Amado line.



MARIA CÂNDIDA MACHADO

M E S H & F U S I O N

Maria Cândida is a specialist in designing chairs, tables, and lamps. Her attention to detail can be seen on her meticulous work. Her timeless elegance is her trademark.



MANUEL BANDEIRA

S U G A R L O A F

Manuel Bandeira taps into his own personal experiences to develop unique design. His unmistakable hallmark conveys simplicity, elegance and comfort in his work.



TATIANA MANDELLI

S E D O N A

Tatiana Mandelli leads the way with her visionary perspective. She creates and adds new elements to the seating experience. The accurate use of light and shadow in the Sedona Line is a great example of her incessant desire for a new, and unique vision.



LUCIANO MANDELLI

S L I M , B O S S & S P O O L

The continuous search for materials and processes is the daily inspiration of Luciano. The possibility of creation, optimization and personalization, according to the profile of each client, is what moves Luciano towards the development of practical, comfortable and beautiful pieces.



ROSENBAUM & O FETICHE

P A I N H O

Design used to service people. Rosenbaum & O uses this approach to create objects that connect. The pure form of their design transmits, beautifully, the Brazilian Culture and its identity, exposing the nation's aesthetics like no other.



ANDRÉ BRANDÃO & MÁRCIA VARIZO

S A I L O R C H A I S E

By adding their talents, while holding, seemingly, divergent points of view, the couple finds balance, versatility and harmony in their aesthetic compositions.

USA

CLIMA OUTDOOR

3650 N Miami
Ave Miami, FL 33127
+1 (305) 576-8181

LA SHOWROOM

PDC - 8687 Melrose Avenue, Suite
B116
West Hollywood, CA 90069
+1 (424) 335-0711

OC SHOWROOM

Orange County, CA
+1 (714) 825-0054

WALTERS - D&D

979 3rd Ave #538
New York, NY 10022
+1 (212) 758-0472

 [tidellioutdoor](#)

 [tidellioutdoor](#)

 [tidellioutdoor](#)

 www.tidelli.com

Tidelli
OUTDOOR LIVING

Photography by
Catarina Monnier / Bettina Kaplan

Model
Adriana Nunes Quintiliano

Photo Shoot Locations
MAM-BA / Costa do Sauípe - BA / Praia
do Forte - BA / Casa do Rio Vermelho
Jorge Amado e Zélia Gataí - BA / Zank
By Toque Hotel - BA

Styling / Art Direction
Tidelli

